

EXCELLENCE IN SCAFFOLDING



BROCHURE edition 05/07.03



CONTENTS



At a glance	3
Construction / The essential advantages of the system	4 - 5
Assembly Frames	6
Decks	7
„Inside“ Access	7
„Outside“ Access	8
Intermediate Transom	8
Vertical Bracing	9
Base Jacks	9
Side Guards	10
Upper Scaffold Guard Rails	11
Guard Scaffold	11
Scaffold Extensions	12
Anchoring	13
Protective Roofing	14
Mobile Tower Accessories	14
Scaffold Spare Parts	15
Examples for Frame Scaffold UNI-CONNECT 70	16 - 17
The product range	18
www.mj-geruest.de	19

All dimensions and weights are non-binding guide values.

We reserve the right to change technical specifications.

Business will be conducted exclusively in accordance with our Terms and Conditions of Sale and Delivery. These conditions are part of our General Terms and Conditions of Business. Place of business and jurisdiction is Plettenberg, Germany.

Extended reservation of property rights until full payment of all our outstanding accounts receivables.

At a glance:

UNI-CONNECT 70 is compatible with the SpeedyScaf system by Layher. The quick-assembly scaffold MJ UNI-CONNECT 70 has the overall approval of the German Institute of Planning and Building Regulation, Berlin, approval number Z-8.1-872 for standard designs up to 24 m, plus jackscrew. For the assembly frame made of steel 2.00 m x 1.09 m and the assembly frame made of aluminium 2.00 m x 0.73 m we have an official agreement certificate which confirms the conformity with the approval Z-8.1-844.

Due to the wedge-lock system and the frames' upper U-transom for easy hooking-in of the decks the UNI-CONNECT system is comfortable in handling and saves time in erecting and dismantling. Furthermore these are the essential safety features of our system.

The wedge-lock system with its specific and slant surface quality as the centre connecting element between frames, diagonals and guard rails causes a secure and stiffening connection. The decks with 2 or 3 claws (depending on the width) ensure a safe absorption of inherent and moving loads, reinforce the whole system and produce a stable connection between the single scaffold bays.

UNI-CONNECT 70 is applicable according to Load Class 3 and can also be used as a guard and roof guard scaffold.

The application of a canopy is proven in the standard version.

A wide range of coordinated accessories offers a flexible system allowing a trouble-free scaffold even at complicated objects.

UNI-CONNECT 70 is available in steel as well as in aluminium design.

MEMBER COMPANY IN THE
GERMAN ASSOCIATION OF
SCAFFOLD CONSTRUCTION



QUALITY PROTECTION/
STEEL SCAFFOLD
CONSTRUCTION



Reasons in favour of UNI-CONNECT 70:

Economic efficiency

through quick erection and dismantling

High return on investment

through long lifetime

Safety

through building inspectorate approval

Flexibility

through bay lengths up to 4.14 m

Reasons in favour of MJ:

Experience

based on more than 35 years of scaffold
production

Certified Quality Management

according to DIN EN ISO 9001

Highest Product Quality

"Made in Germany"

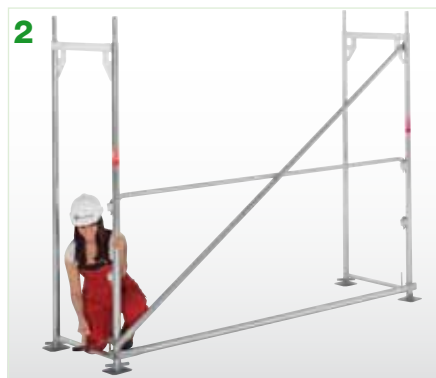
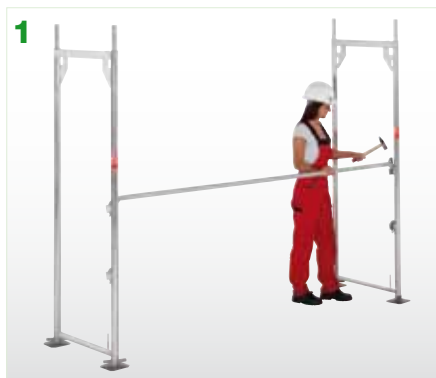
Continuity

in company development

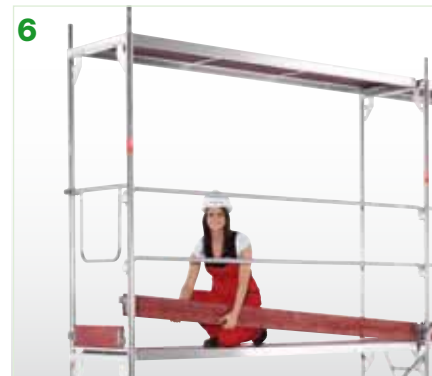
Fair and customer-related

cooperation

UNI-CONNECT



UNI-CONNECT





ASSEMBLY FRAME, STEEL

Steel tube \varnothing 48.3 x 2.70 mm, hot-dip galvanised, U-profile for locating decks.

2.00	0.73	17.80	000853
1.50	0.73	16.40	000856
1.00	0.73	12.80	000855
0.66	0.73	10.40	000446



ASSEMBLY FRAME, ALUMINIUM

Tube \varnothing 48.3 x 4.00 mm, otherwise as above.

2.00	0.73	8.60	000863
1.00	0.73	5.40	000864
0.66	0.73	4.20	000459



ASSEMBLY FRAME 1.09 WIDE, STEEL

Steel tube \varnothing 48.3 x 3.20 mm, hot-dip galvanised, U-profile for locating decks.

2.00	1.09	23.40	000858
1.50	1.09	20.20	000861
1.00	1.09	15.90	000859
0.66	1.09	13.40	000456



ASSEMBLY FRAME 0.36 WIDE, STEEL

For 1-board use. Steel tube \varnothing 48.3 mm, hot-dip galvanised, for locating a 32 cm wide deck.

2.00	0.36	18.30	000876
1.00	0.36	10.60	000604
0.66	0.36	8.60	000605



SIDE BRACKET FRAME

Steel tube \varnothing 48.3, hot-dip galvanised. To be used to overcome problems due to horizontal protrusions in facade, e.g. roof gutters.

2.00	0.73	22.00	000862
2.00	1.09	24.00	000452



WALK-THROUGH FRAME

Steel tube \varnothing 48.3 mm, hot-dip galvanised. To be used as a passageway and a protection of pedestrians.

2.20	1.50	31.50	003152
------	------	-------	--------

Decks



STEEL DECK

Hot-dip galvanised, perforated and non-slip surface. Up to load class 6, depending on length.

Length m	Width m	Weight kg	Art. No.
0.73	0.32	6.20	000473
1.09	0.32	8.60	000472
1.57	0.32	11.90	000474
2.07	0.32	15.50	000475
2.57	0.32	19.00	000476
3.07	0.32	22.20	000477
4.14	0.32	32.00	000478



COMBI DECK WITH PLYWOOD PANEL

Water resistant surface, non-slip and lightweight. Veneer panels BFU 100 G-12 (G-Guard, 12 mm thick). Load class 3 (2.00 kN/m²).

1.57	0.61	13.20	000481
2.07	0.61	17.00	000482
2.57	0.61	20.00	000483
3.07	0.61	23.00	000484



COMBI DECK WITH ALUMINIUM PANEL

With non-slip aluminium plank, weather resistant, lightweight and robust. Up to load class 4, depending on length.

1.57	0.61	12.00	000519
2.07	0.61	15.00	000521
2.57	0.61	18.00	000522
3.07	0.61	20.00	000523



FULL ALUMINIUM DECK

Lighter and easy to handle due to its low height of 5 cm. Space-saving for storage and transport, 100% recyclable.

3.07	0.61	21.4	000495
2.57	0.61	18.3	000496

„Inside“ Access



FULL ALUMINIUM ACCESS DECK

With non-slip aluminium panel and internal aluminium ladder. Weather resistant, lightweight and robust.

2.57	0.61	22.00	000486
3.07	0.61	25.00	000488



ACCESS LADDER

Aluminium.

2.00	0.40	3.00	001323
------	------	------	--------

ACCESS LADDER

Steel, hot-dip galvanised.

2.00	0.40	10.50	000172
------	------	-------	--------



ALUMINIUM COMBI ACCESS DECK

with plywood panel and aluminium ladder. Water resistant top surface, non-slip and lightweight.

2.57	0.61	24.00	000492
3.07	0.61	29.00	000494

Veneer panels BFU 100 G-12 (G-Guard). Load class 3 (2.00 kN/m²).

„Outside“ Access

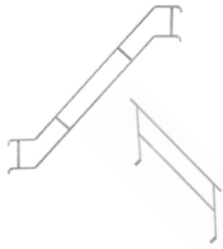
Length m	Width m	Weight kg	Art. No.
-------------	------------	--------------	-------------



STAIRCASE

Aluminium.

for 2.57 m bay	3.25	0.60	23.00	000419
for 3.07 m bay	3.65	0.60	28.00	000420



STAIRCASE HANDRAIL, OUTSIDE

Steel, hot-dip galvanised.

for 2.57 m bay	3.25		16.00	003182
for 3.07 m bay	3.65		16.50	003181



STAIRCASE HANDRAIL, INSIDE

Steel, hot-dip galvanised.

			11.50	000425
--	--	--	-------	--------



STEP ACCESS PLATFORM BRACKET

For erecting a self-contained staircase extending in front of an existing scaffold.

0.50	0.30	7.50	000234
------	------	------	--------

Intermediate Transom

Length m	Width m	Weight kg	Art. No.
-------------	------------	--------------	-------------



STARTING TRANSOM

Steel, for fixing decks or staircases just above ground level.

	0.73	3.00	000595
--	------	------	--------



U-TRANSOM

U-profile with half couplers for locating decks in any level.

	0.73	3.60	000594
	1.09	6.50	000593



DECKING RAIL

Steel, hot-dip galvanised.
With half couplers for locating decks on lattice beams and platform scaffolds.

1.00		4.50	000571
2.00		9.00	000567
3.00		13.50	000566
4.00		18.00	000568
5.00		22.50	000570
6.00		26.50	000572

Vertical Bracing

Length m	Width m	Weight kg	Art. No.
-------------	------------	--------------	-------------



DIAGONAL BRACE
with wedge-coupler
Steel tube Ø 42.4 mm
hot-dip galvanised,
with rotating wedge-coupler,
for strong bracing,
with possibility for adjustment.

for 2.07 m bay	2.80	6.50	000554
for 2.57 m bay	3.20	7.00	000552
for 3.07 m bay	3.60	8.30	000553



HORIZONTAL BRACE
Steel tube Ø 48.3 mm
hot-dip galvanised,
with two welded-on half couplers.

for 2.07 m bay	2.07	9.30	000548
for 2.57 m bay	2.57	10.50	000550
for 3.07 m bay	3.07	13.20	000551

Base Jacks

Length m	Width m	Weight kg	Art. No.
-------------	------------	--------------	-------------



BASE JACK
For heavy loads.
Steel, with adjusting-nut, galvanised,
fast-action thread with lock,
base plate 150 mm x 150 mm.
Can also be used as head plate.

0.30	2.00	000318
0.50	2.50	000319
0.60	3.00	000320
0.78	3.50	000321
1.00	4.50	000322



TILTING BASE JACK
See base jacks above,
but with swivelling base plate.
Additional longitudinal scaffold
bracing at base required.

0.50	3.10	000323
------	------	--------



ADJUSTMENT TUBE
For levelling uneven ground.
To be used in conjunction with
starting transom and base jack.
Steel, hot-dip galvanised.
Adjustable range 10 x 0.10 m = 1.00 m.

1.80	5.80	000402
------	------	--------



SINGLE GUARD RAIL

Steel tube Ø 33.7 mm,
hot-dip galvanised.

0.73		1.20	000499
1.09		2.20	000500
1.57		2.40	000501
2.07		3.80	000502
2.57		4.60	000503
3.07		5.90	000504



DOUBLE GUARD RAIL

Steel tube Ø 33.7 mm,
hot-dip galvanised, rear-guard.

1.57		7.20	000509
2.07		9.80	000510
2.57		11.80	000511
3.07		13.50	000512
4.14		21.00	000513



DOUBLE GUARD RAIL

Aluminium, rear-guard.

1.57		3.00	002212
2.07		4.00	002211
2.57		5.00	002210
3.07		5.80	002205



GUARD RAIL COUPLER

half coupler with wedge-lock
system for fixing guard rails.

AF 19		1.20	000591
AF 22		1.20	002464



DOUBLE END GUARD RAIL

Steel tube Ø 33.7 / 26.9 mm,
double side guard at the ends.

0.73		3.40	000530
1.09		3.80	000531



TIMBER TOEBOARD

With steel fitting for hooking in the
toeboard-pins of the frames.

0.73	0.15	1.50	000537
1.09	0.15	2.50	000538
1.57	0.15	3.00	000539
2.07	0.15	4.00	000540
2.57	0.15	4.80	000541
3.07	0.15	6.50	000542
4.14	0.15	9.00	000543



END TIMBER TOEBOARD

With steel fittings,
for end protection.

0.73	0.15	1.50	000544
1.09	0.15	2.00	000545

Upper Scaffold Guard Rails

Length m	Width m	Weight kg	Art. No.
-------------	------------	--------------	-------------



TOP END GUARD FRAME, STEEL

Steel tube Ø 48.3 mm, hot-dip galvanised, side guard and decking fastener on the top scaffold platform.

TOP END GUARD FRAME, ALUMINIUM

Aluminium, otherwise as above.

1.00	0.73	12.50	000865
1.00	1.09	14.70	000556



TOP INTERMEDIATE POST, STEEL

Steel tube Ø 48.3 mm, hot-dip galvanised, with full decking fastener on the top scaffold platform and patented handrail location system for guard rail.

TOP INTERMEDIATE POST, ALUMINIUM

Aluminium, otherwise as above.

1.00	0.73	6.50	000867
1.00	1.09	7.30	000869



GUARD RAIL POST, STEEL

Steel tube Ø 48.3 mm, with joint pin and short decking fastener.

GUARD RAIL POST, ALUMINIUM

Aluminium, otherwise as above.

1.00		5.10	000871
------	--	------	--------



SINGLE GUARD RAIL POST

Steel tube Ø 48.3 mm, with joint pin, without decking fastener.

GUARD RAIL POST 2.00 m

with short decking fastener and joint pin.

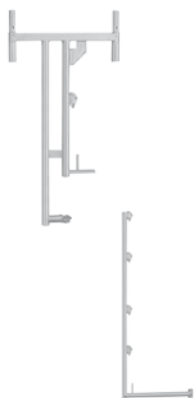
1.00		2.10	000872
------	--	------	--------

1.00		4.70	000873
------	--	------	--------

2.00		9.50	000875
------	--	------	--------

Guard Scaffold

Length m	Width m	Weight kg	Art. No.
-------------	------------	--------------	-------------



ROOFERS BRACKET

for protection of roofers, for use in roof guard scaffolds (load class 3).

PROTECTIVE NET POST

0.73 m wide
1.09 m wide

WEATHER PROTECTION POST

Steel, hot-dip galvanised, incl. 3 swivel pins for fastening tarpaulins and tarp battens (guard rails), with connecting piece for guard rail posts.

	0.73	15.60	000275
--	------	-------	--------

2.00	0.73	13.00	000874
------	------	-------	--------

2.00	1.09	14.00	000563
------	------	-------	--------

2.00		12.00	000565
------	--	-------	--------

For scaffold protection tarpaulin, see our „Universal Accessories“ brochure.



HOP-UP BRACKET 0.36
With half coupler, hot-dip galvanised.

	0.36	3.70	000582
--	------	------	--------



HOP-UP BRACKET 0.73
With half coupler, hot-dip galvanised.

	0.73	6.20	000585
--	------	------	--------



FRAME HOP-UP BRACKET 0.73
For scaffold extension and construction of a gap-free protection roof.

	0.73	10.00	000589
--	------	-------	--------



HOP-UP BRACKET 1.09
With half coupler, hot-dip galvanised.

	1.09	9.00	000586
--	------	------	--------



PROP STRUT
With two half couplers, for supporting the hop-up brackets.

1.77		5.30	000588
1.95		5.80	000587



LOCK AGAINST LIFT-OFF
For hop-up brackets.

	0.32	1.00	000580
	0.73	1.50	000581
	1.09	2.00	000579



ALUMINIUM FILLER DECK
Gap closure for hop-up brackets.

	1.57		000573
	2.07		000574
	2.57		000575
	3.07		000576

**CONNECT WALL TIE WITH PLATE**

Steel tube Ø 48.3 mm, hot-dip galvanised.
To be installed with a double coupler.

**WALL TIE**

Steel tube Ø 48.3 mm, hot-dip galvanised.
Installation as short scaffold tie with one double coupler, as long scaffold tie with two double couplers.

**DOUBLE COUPLER Ø 48.3 mm**

Heavy duty model, ribbed, class B (BB) according to DIN 4420 and ES 74.
Hot-dip galvanised drop-forged steel, for connecting two scaffold tubes at right angles.
Collar nuts 19 or 22 mm width A/F.
Approved load of 9 kN (900 kg) as single coupler or 15 kN (1500 kg) as double coupler.
Collar nut torque 50 Nm.

From 1.000 pieces ask for net price!

**SWIVEL COUPLER Ø 48.3 mm**

Heavy duty model, ribbed, class B (BB) according to DIN 4420 and ES 74.
Hot-dip galvanised drop-forged steel, for connecting scaffold tubes at any required angle.
Collar nuts 19 or 22 mm width A/F.
Approved load of 6 kN (600 kg).
Collar nut torque 50 Nm.

From 1.000 pieces ask for net price!

**For special couplers see our
Universal Accessories brochure.**

**EYE-BOLT**

galvanised.
From 1.000 pieces ask for net price!

**EXPANDING PLUG**

For eye-bolts with 12 mm wood thread.
From 10.000 pieces ask for net price!

**PLASTIC CAP**

For closing anchor drill-holes.
From 10.000 pieces ask for net price!

0.70		2.70	000124
0.30		1.40	000240
0.40		1.80	000242
0.50		2.00	000125
0.60		2.60	000241
1.00		3.80	000127
1.30		4.80	000131
1.50		5.50	000132
A/F 22		1.20	000325
A/F 19		1.20	000326
A/F 22		1.40	000328
A/F 19		1.40	000329
0.09		0.155	000358
0.12		0.175	000359
0.16		0.210	000360
0.19		0.235	000363
0.23		0.265	000361
0.35		0.364	000362
0.08		0.007	000357
		0.003	000651

Protective Roofing

Length m	Width m	Weight kg	Art. No.
-------------	------------	--------------	-------------



ROOF GUARD EXTENSION

Used in conjunction with 0.73 m frame hop-up bracket and lock against lift-off.

0.73		4.00	000518
------	--	------	--------



LOCK AGAINST LIFT-OFF

Steel, hot-dip galvanised, suitable for use with roof guard extension.

2 boards		2.00	000590
----------	--	------	--------

Mobile Tower Accessories

Length m	Width m	Weight kg	Art. No.
-------------	------------	--------------	-------------



STEEL BEAM 200 FOR MJ ALUMINIUM ROLLING TOWER

Steel tube, hot-dip galvanised, for building mobile towers.

2.00		12.00	000599
------	--	-------	--------



STEEL BEAM 300 FOR MJ ALUMINIUM ROLLING TOWER

Steel tube, hot-dip galvanised, for building mobile towers.

3.00		23.00	000598
------	--	-------	--------



CASTOR WITH ADJUSTABLE SPINDLE

1.000 kg maximum load, with nylon wheel, height-adjustable.

		7.00	000332
--	--	------	--------



LOCKING PIN

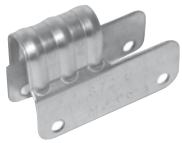
		0.15	000508
--	--	------	--------

**RIVETS 23 x 1 x 54 mm**

0.033 001811

**RIVETS 12 x 1 x 54 mm**

0.011 001805

**TOEBOARD FITTING UC**

0.40 004203

**END TOEBOARD FITTING UNI + UC**
Two pieces per toeboard needed.

0.15 002039

**RIVETS 8 x 1 x 42 mm**

0.011 001820

**M14 RINGBOLT**
For handrail support and fixing top decking.

0.14 001761

Examples for Frame Scaffold

UNI-CONNECT 70

Scaffold Bay Length 3.07 m	101.31	52.19	30.70	15.35	12.28	12.28
Scaffold Length (m) x Working Height (m)	x 10.20	x 10.20	x 10.20	x 10.20	x 10.20	x 8.20
Working Area	1033 m ²	532 m ²	313 m ²	157 m ²	125 m ²	101 m ²

BASIC CONFIGURATION

Assembly Frame 2.00 m x 0.73 m Steel	136	72	44	24	20	15
Steel Deck 3.07 m x 0.32 m	264	136	80	40	32	24
Diagonal Brace for 3.07 m bay	32	20	12	8	4	3
Single Guard Rail 3.07 m, twice for two levels	165	85	50	25	20	20
Timber Toeboard 3.07 m for two levels	66	34	20	10	8	8
End Timber Toeboard 0.73 m for two levels	4	4	4	4	4	4
Double End Guard Rail 0.73 m for two levels	2	2	2	2	2	2
Top Intermediate Post 0.73 m with decking fastener	32	16	9	4	3	3
Top End Guard Frame, Steel 0.73 m	2	2	2	2	2	2
Base Jack 0.30 m	68	36	22	12	10	10
Horizontal Brace 3.07 m	8	5	3	2	1	1

ANCHORAGE

Connect Wall Tie with Plate	36	20	13	8	7	5
Double Coupler with Collar nuts A/F 19	36	20	13	8	7	5
Expanding Plug	36	20	13	8	7	5
Eye-Bolt 12 x 120 mm	36	20	13	8	7	5

SUPPLEMENTARY EQUIPMENT

Single Guard Rail 3.07 m, twice for all levels	132	68	40	20	16	8
Timber Toeboard 3.07 m for all levels	66	34	20	10	8	4
End Timber Toeboard 0.73 m for all levels	4	4	4	4	4	2
Double End Guard Rail 0.73 m for all levels	4	4	4	4	4	2

OPTIONAL EQUIPMENT

Aluminium Combi Access Deck 3.07 m x 0.65 m with plywood panel and aluminium ladder	4	4	4	4	4	3
Assembly Frame Aluminium 2.00 m x 0.73 m	136	72	44	24	20	15
Assembly Frame 2.00 m x 0.73 m Steel	-136	-72	-44	-24	-20	-15

Scaffold Bay Length 2.57 m	102.80	51.40	30.84	15.42	12.85	10.28
Scaffold Length (m) x Working Height (m)	x 10.20	x 10.20	x 10.20	x 10.20	x 10.20	x 8.20
Working Area	1048 m ²	524 m ²	314 m ²	157 m ²	131 m ²	85 m ²

BASIC CONFIGURATION

Assembly Frame 2.00 m x 0.73 m Steel	164	84	52	28	24	15
Steel Deck 2.57 m x 0.32 m	320	160	96	48	40	24
Diagonal Brace for 2.57 m bay	40	20	12	8	8	3
Single Guard Rail 2.57 m, twice for two levels	200	100	60	30	25	17
Timber Toeboard 2.57 m for two levels	80	40	24	12	10	8
End Timber Toeboard 0.73 m for two levels	4	4	4	4	4	4
Double End Guard Rail 0.73 m for two levels	2	2	2	2	2	2
Top Intermediate Post 0.73 m with decking fastener	39	19	11	5	4	3
Top End Guard Frame, Steel 0.73 m	2	2	2	2	2	2
Base Jack 0.30 m	82	42	26	14	12	10
Horizontal Brace 2.57 m	10	5	3	2	2	1

ANCHORAGE

Connect Wall Tie with Plate	43	23	13	9	8	6
Double Coupler with Collar nuts A/F 19	43	23	13	9	8	6
Expanding Plug	43	23	13	9	8	6
Eye-Bolt 12 x 120 mm	43	23	13	9	8	6

SUPPLEMENTARY EQUIPMENT

Single Guard Rail 2.57 m, twice for all levels	160	80	48	24	20	8
Timber Toeboard 2.57 m for all levels	80	40	24	12	10	5
End Timber Toeboard 0.73 m for all levels	4	4	4	4	4	2
Double End Guard Rail 0.73 m for all levels	4	4	4	4	4	2

OPTIONAL EQUIPMENT

Aluminium Combi Access Deck 2.57 m x 0.65 m with plywood panel and aluminium ladder	4	4	4	4	4	2
Assembly Frame Aluminium 2.00 m x 0.73 m	164	84	52	28	24	15
Assembly Frame 2.00 m x 0.73 m Steel	-164	-84	-52	-28	-24	-15

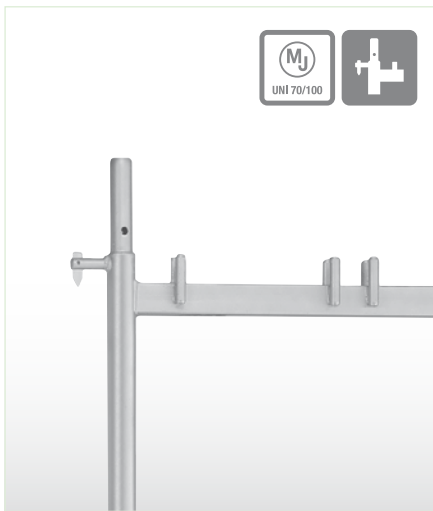
The product range

As one of the leading manufacturers of scaffolds we produce and provide scaffolding systems, that are compatible to certain scaffold series of the companies plettac, Layher and RUX. These systems also are available in aluminium.

Our product range comprises outside building scaffolds, modular scaffolds, non-system scaffold accessories, mobile scaffolds, as well as keeder awning roofs.

90% of our scaffolding system parts are produced in Germany in our plant in Plettenberg.

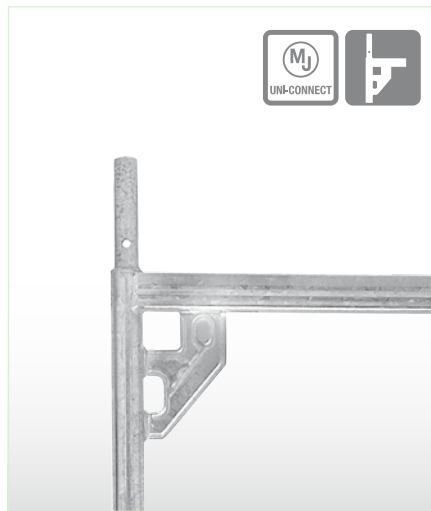
All our scaffolds obviously comply with the requirements of the authorities respectively have the overall approval of the German Institute for Planning and Building Regulations (DIBt) in Berlin. There also exist additionally several European approvals.



Overall approval UNI 70 DUO of the DIBt Z-8.1-303.

Overall approval UNI 70 of the DIBt Z-8.1-184.

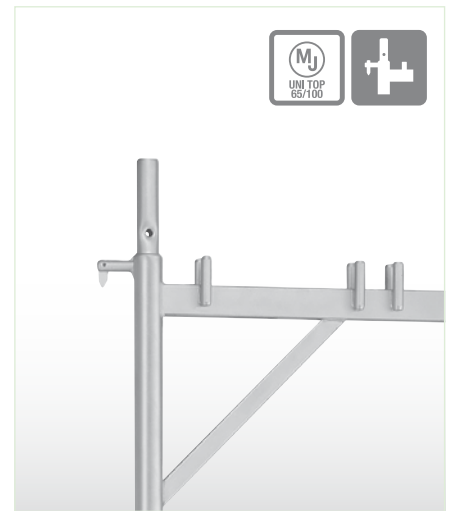
Overall approval UNI 100 of the DIBt Z-8.1-871.



Approval UNI-CONNECT 70 DUO of the DIBt Z-8.1-872.

Certificat of compliance for the approval Nr. Z-8.1-840 for the vertical assembly frame, steel 2,00 m x 1,09 m.

Certificat of compliance for the approval Nr. Z-8.1-844 for the vertical assembly frame, aluminium 2,00 m x 0,73 m.



Overall approval of the DIBt Nr. Z-8.1-902.



GS-sign for approved security.



High quality standards and longlife functionality are the features that excel our non-system scaffold accessories

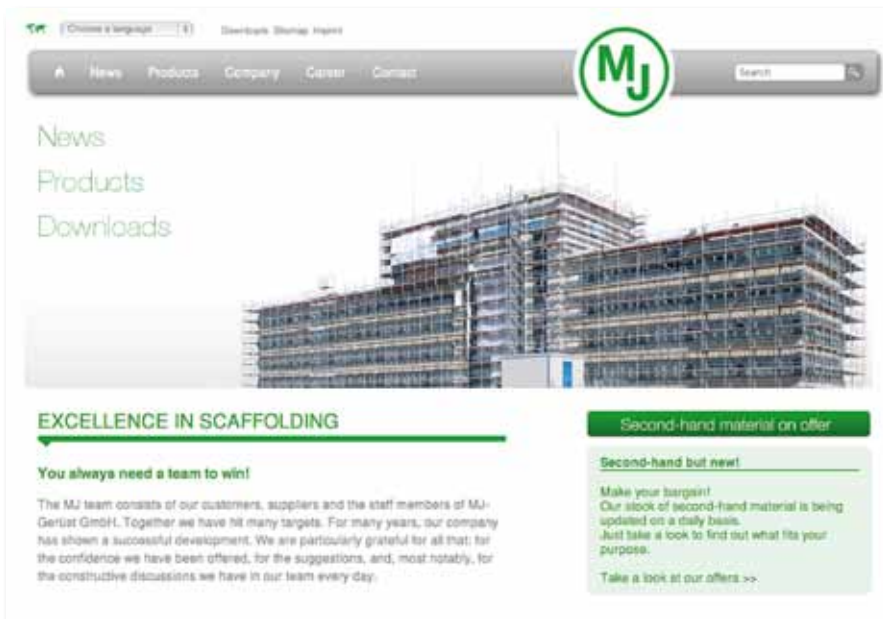


Release of the overall approval according to the actual European requirements in the 3rd quarter 2009.

As a modern and active manufacturer of scaffolds we are online up-to-date, in five languages. Our Internet page had been adapted especially to the requirements of the customers who use and need scaffolds.

Convince yourself.

We are looking forward to your visit on the Internet, 365 days a year, 24 hours.



DOWNLOADCENTRE

Fast and easy access to the most important documentation.

PRODUCTS

The complete range at a glance.

NEWS

With one click you will find out what is new with MJ.

OCCASIONS

Actual used parts at special rates.

CREDENTIALS

Extracts of our customers' interesting projects.

TEAM

Find and get in contact with the corresponding member of our staff.



MJ-Gerüst GmbH

Ziegelstraße 68
58840 Plettenberg
Germany
Fon +49 (23 91) 81 05 -372
Fax +49 (23 91) 81 05 -375
eMail: infomj@mj-geruest.de
www.mj-geruest.de

Subsidiary Berlin

Poratzstraße
16225 Eberswalde
Germany
Fon +49 (33 34) 58 90 -70
Fax +49 (33 34) 58 90 -718
Mobile +49 (171) 69 18 958

The other companies belonging to the Junior Group:

Junior Kühlkörper GmbH

Heatsinks
Precision components for
the electronics and electrical industry
58840 Plettenberg
Germany
Fon +49 (23 91) 81 05 -200
Fax +49 (23 91) 81 05 -280
www.kuehlkoerper.de

MJ - Modul Rent GmbH

Modular space rental
Sales and rental of container accomodation
for residential use, office buildings, industry
and commerce
58840 Plettenberg
Germany
Fon +49 (23 91) 81 05 -400
Fax +49 (23 91) 81 05 -457
www.mj-modulrent.de

