

EXCELLENCE IN SCAFFOLDING



BROCHURE edition 10/07.02



CONTENTS



Scaffold Tubes	4
Couplers	5 - 7
Lattice Beams	7 - 8
Scaffold Spans	9 - 10
Base Plates	
Ladders	11
Anchoring	11 - 12
Roof fall arrest scaffolds and safety protection nets	12
Scaffold protective sheeting & netting	13
Aluminium Keder Rail System	
Scaffold Ratchets	15
Storage / Transport / Hoists	16
Hoists	17 - 20
Scaffold Spare Parts	21
Classification of scaffoldtype on the building site	22
Advertising Tarpaulin Sheet	22
Measuring Instruments	22

All dimensions and weights are non-binding guide values.

We reserve the right to change technical specifications.

Business will be conducted exclusively in accordance with our Terms and Conditions of Sale and Delivery. These conditions are part of our General Terms and Conditions of Business. Place of business and jurisdiction is Plettenberg, Germany.

Extended reservation of property rights until full payment of all our outstanding accounts receivables.

At a glance:

As part of a strong group of companies, since the early '70s we have specialised in the production and sales of top-quality, market-leading scaffold systems complying with the regulation of DIN 4420-1 and EN 12810 + EN 12811. Moreover, we have placed special emphasis on the production of system-free accessories.

Starting with couplers for various construction, lattice beams made of aluminium and steel, aluminium bearers, scaffold tubes made of steel and aluminium, ladders, catch and side protection nets, mobile fences, scaffold hoists up to laser measuring instruments, we offer a broad range of system-free scaffold accessories.

High quality standards and long-life functionality – these are the properties that distinguish our system-free accessory assortment.

MEMBER COMPANY IN THE
GERMAN ASSOCIATION OF
SCAFFOLD CONSTRUCTION



QUALITY PROTECTION/
STEEL SCAFFOLD
CONSTRUCTION



Reasons in favour of MJ's system-free accessories:

Economic efficiency

through quick erection and dismantling

High return on investment

through long lifetime

Safety

through building inspectorate approval

Flexibility

through 2 scaffold widths and bay lengths up to 4 m

Diversity of components

for modern and structural scaffolding

Approved load up to 6 kN/m²

Reasons in favour of MJ:

Experience

based on more than 35 years of scaffold production

Certified Quality Management

according to DIN EN ISO 9001:2000

No competition to the user

through waiving of company-owned service providers

Continuity

in company development

Fair and customer-related

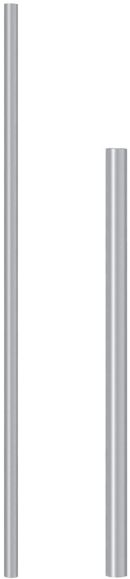
cooperation

1 1/2" SCAFFOLD TUBE

Steel, hot-dip galvanised.

Measurements according to DIN 4427 Ø 48.3 x 4,00 mm.

In lengths of 6.00 m. Minimum limit of elasticity 235 N/mm² (2.400 kg/cm²).
Use with double couplers approved.
Lengths less than 6.00 m + 8% surcharge.



STEEL SCAFFOLD TUBE 48.3 x 3.2 mm

hot-dip galvanised.

1 1/2" ALUMINIUM SCAFFOLD TUBE

Aluminium AlMgSi 1 F28, Ø 48.3 x 4.00 mm.

In lengths of 6.00 m and 8.00 m.
Minimum limit of elasticity 200 N/mm².
Use with standard couplers for
lightweight scaffold constructions.

TRIANGULAR BRACE

Hot-dip galvanised steel tube Ø 48.3 mm.
3 scaffold tubes connected in
triangular form.
Brace with high load capacity.
Distance between the tubes: 125 mm.

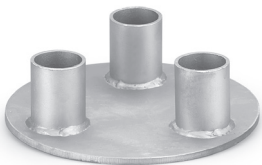


TRIANGULAR BRACE

Also available in aluminium.

TRIANGULAR BASE PLATE

Base plate for triangular brace,
hot-dip galvanised.
Steel plate 300 x 8 mm with three welded
tube studs to carry the load.



6.00		4.20/m	000334
------	--	--------	--------

6.00		3.77/m	004087
------	--	--------	--------

6.00		8.40	002028
------	--	------	--------

8.00		11.20	002031
------	--	-------	--------

3.00		40.00	000150
------	--	-------	--------

4.00		53.00	000151
------	--	-------	--------

5.00		65.00	000152
------	--	-------	--------

6.00		75.00	000153
------	--	-------	--------

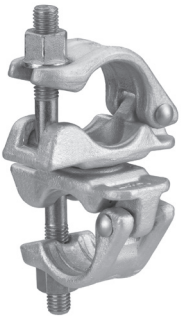
			on request
--	--	--	------------

		6.00	000155
--	--	------	--------

**DOUBLE COUPLER Ø 48.3 mm**

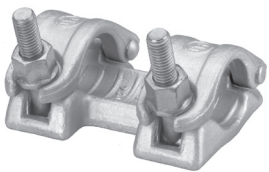
Heavy duty model, ribbed, class B (BB) according to DIN 4420 and ES 74. Hot-dip galvanised drop-forged steel, for connecting two scaffold tubes at right angles. Collar nuts 19 or 22 mm width A/F. Approved load of 9 kN (900 kg) as single coupler or 15 kN (1.500 kg) as double coupler. Collar nut torque 50 Nm.

A/F 22		1.20	000325
A/F 19		1.20	000326

**SWIVEL COUPLER Ø 48.3 mm**

Heavy duty model, ribbed, class B (BB) according to DIN 4420 and ES 74. Hot-dip galvanised drop-forged steel, for connecting scaffold tubes at any required angle. Collar nuts 19 or 22 mm width A/F. Approved load of 6 kN (600 kg). Collar nut torque 50 Nm.

A/F 22		1.40	000328
A/F 19		1.40	000329

**TENSION COUPLER Ø 48.3 mm**

Heavy duty model, ribbed, class B according to DIN 4420 and ES 74. Hot-dip galvanised drop-forged steel, for extending scaffold tubes in conjunction with a joint pin. Hexagon nut with collar 19 or 22 mm width A/F. Approved load of 6 kN (600 kg). Collar nut torque 50 Nm.

A/F 22		1.80	000330
--------	--	------	--------

**TUBE CONNECTING SPIGOT**

Hot-dip galvanised drop-forged steel, for making end-to-end connections, to be used with the sleeve coupler and 1 1/2" scaffold tubes.

		1.00	000331
--	--	------	--------

**HALF COUPLER Ø 48.3 mm**

Heavy duty model, ribbed, with test mark B to DIN 4420 and ES 74. Hot-dip galvanised drop-forged steel, as weld-on coupling or for special constructions. With collar nuts 19 or 22 mm width A/F. Approved load of 9 kN (900 kg) as single coupler. Collar nut torque 50 Nm. The Ø 16 mm bolt hole allows the half coupler also to be bolted in place.

A/F 22		0.70	001773
A/F 19		0.70	000628



TOEBOARD COUPLER
Half coupler with welded-on toeboard pin.
Galvanised drop-forged steel.

A/F 22			000647
A/F 19			002711



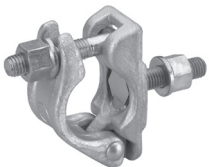
HOOK COUPLER
Hot-dip galvanised drop-forged steel.
Half coupler with welded stiffening hook.
The ideal solution for anchoring scaffolds
at a larger distance to the facade.
Collar nut 19 or 22 mm width A/F.
Collar nut torque 50 Nm.

A/F 22		1.00	000224
A/F 19		1.00	002551



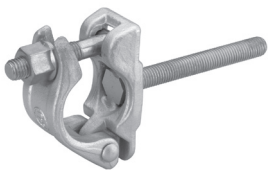
CLAW COUPLER
Hot-dip galvanised drop-forged steel.
Half coupler with welded steel angle.
For hanging scaffold tubes and chains
on steel constructions. Approved load
of 9 kN (900 kg) to be used in pairs.
Collar nut 19 or 22 mm width A/F.
Collar nut torque 50 Nm.

A/F 22		1.00	000225
A/F 19		1.00	000226



BOLT-ON COUPLER
Hot-dip galvanised drop-forged steel half
coupler. Collar nut 19 or 22 mm width A/F.
With welded on machine
bolt M 14 x 50 mm.

A/F 22		0.80	000136
--------	--	------	--------



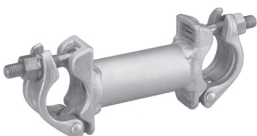
COMBINATION COUPLER
Hot-dip galvanised drop-forged steel half
coupler. With welded on threaded rod
14 x 120 mm. For joining scaffold
tubes with wooden components.
Collar nut 19 or 22 mm width A/F.
Collar nut torque 50 Nm.

A/F 22		1.00	000392
--------	--	------	--------



GRAVITY PIN COUPLER Ø 48.3 mm
Hot-dip galvanised drop-forged steel
half coupler with welded toggle.
Collar nut 19 or 22 mm width A/F.
Collar nut torque 50 Nm.

A/F 22		0.80	000134
A/F 19		0.80	002354



DISTANCE COUPLER
Galvanised steel tube Ø 48.3 mm with two
welded half couplers.

		2.00	000233
--	--	------	--------

Couplers

Length m	Width m	Weight kg	Art. No.
-------------	------------	--------------	-------------



TIMBER COUPLER

Hot-dip galvanised drop-forged steel half coupler with drilled angle-iron to take square timber. Collar nut 19 or 22 mm width A/F. Collar nut torque 50 Nm.

A/F 22		1.80	000631
A/F 19		1.80	002704



HEXAGON COLLAR NUT

Galvanised drop-forged, 19 or 22 mm width A/F. Acc. to ISO 898 T. 2 strength class 5.

electrogalvanised	A/F 19	0.030	000166
electrogalvanised	A/F 22	0.035	000165



T-HEAD BOLT

Electrogalvanised drop-forged. M 14 thread, shaft length approx. 68 mm. Strength 5.6 to ISO 898 T.1.

electrogalvanised		0.110	000164
-------------------	--	-------	--------

Lattice Beams

Length m	Width m	Weight kg	Art. No.
-------------	------------	--------------	-------------



LATTICE BEAM, STEEL Ø 48.3 mm

Hot-dip galvanised, 450 mm high. Load depends on the span and is given in a custom load-table.

3.10	0.45	30.00	000108
4.10	0.45	40.00	000109
5.10	0.45	50.00	000110
6.10	0.45	58.00	000111
7.60	0.45	73.00	000112



LATTICE BEAM, ALUMINIUM Ø 48.3 mm

450 mm high. Load bearing depends on the span and is given in a custom load-table.

3.10	0.45	11.00	000255
4.10	0.45	15.00	000257
5.10	0.45	20.00	000258
6.10	0.45	23.00	000259
8.10	0.45	31.00	000261



HEAVY LOAD GRID BEARER, STEEL Ø 48.3 mm

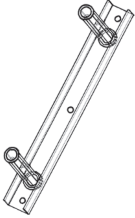
Hot-dip galvanised, 750 mm high. Useful for bridging in special-case constructions with high loading capacity or where longer spans are required.

3.00	0.75	50.00	000115
4.00	0.75	60.00	000114
5.00	0.75	75.00	000116
6.00	0.75	85.00	000117
7.50	0.75	110.00	000118



LATTICE BEAM BASE PLATE

In conjunction with a decking transom.
For continuation of scaffold pattern
when using lattice beams.



WALL CONNECTION FOR LATTICE BEAMS

For dowelling onto the wall.
For lattice beams with a construction height
of 450 mm in spanning constructions,
or the like.



STUD BOLT WITH CIRCLIP

Bolt-free connection of lattice beams
replaces customary bolts 12 x 60,
thus reducing mounting time.



RIDGE CONNECTOR FRAME

Steel, galvanised.
Enables to connect lattice beams
on the roof ridge in a 10° angle.



REINFORCING FRAME

Steel, hot-dip galvanised.
For connecting two parallel mounted lattice
beams. The riveted half couplers ensure
a quick and safe assembly.
For 0.45 m lattice beams.



CONNECTING SPIGOT FOR LATTICE BEAMS

Steel, hot-dip galvanised.
For continuous extension of unit
beams. Suitable for normal type beams
with 3.25 mm wall thickness.



JOINT PIN WITH HALF COUPLER

Steel, hot-dip galvanised.
Can be bolted on any tube Ø 48.3 mm.

		6.00	000235
--	--	------	--------

		3.50	000170
--	--	------	--------

		1.00	002237
--	--	------	--------

0.66	0.45	8.00	000113
------	------	------	--------

2.50	0.45	15.00	000299
------	------	-------	--------

straight		2.00	003588
----------	--	------	--------

bent short		2.00	000283
------------	--	------	--------

bent long		2.50	000123
-----------	--	------	--------

bolt		M 12x60	002048
------	--	---------	--------

nut		M 12	001798
-----	--	------	--------

0.30	A/F 19	1.80	000222
------	--------	------	--------

0.30	A/F 22	1.80	000223
------	--------	------	--------

Approved for use in edge protection and roof guard scaffold to DIN 4420.



ALUMINIUM BRIDGE

Made from closed rectangular profiles. When constructing scaffolding with MJ - aluminium Bridges you will make considerable time and material savings. Thanks to its long span this component is ideal for access scaffolds and bridging. Manufactured to DIN 4420 for all maintenance work of scaffold class 2 (1.5kN/m²). A suitably erected support that will not tilt must be ensured. Depending on the length a bearing of 30 – 50 cm is required. If several boards are placed side-by-side, they can be made to share a common load, using iron rods which are simply slotted through lateral rungs.

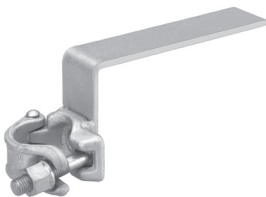
4.00	0.59	23.00	000646
5.20	0.59	30.00	000645
6.00	0.59	35.00	000644
8.00	0.59	59.00	000643
10.20	0.59	72.00	000642



HANDRAIL POST FOR ALUMINIUM BRIDGE

For placing your chosen system handrail posts. This allows problem-free assembly of the three-part handrail.

		2.00	000652
--	--	------	--------

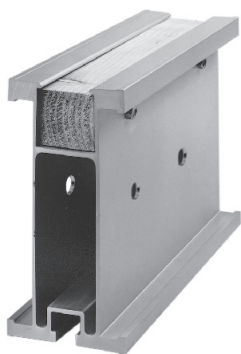


NON -TILT DEVICE

for MJ - aluminium bridges. Hot-dip galvanised drop-forged steel half coupler. Collar nut 19 or 22 mm width A/F. Welded steel angle for stabilising aluminium bridges against sideways tilting. Also usable as decking stabiliser for hop-up bracket 32 without joint pin.

0.25		1.30	000648
------	--	------	--------

Particularly suitable for large-scale bridgings and ceiling scaffoldings.



ALUMINIUM BEARER PROFILE I 160

This new scaffold element can be easily placed on any supportive base. High stiffness without additional stiffeners or tube joints. The high quality alloy (Al Zn 4.5 Mg 1 F 35) is extremely robust and has a high load bearing capacity. It is particularly suited for long bridging and support scaffolding. Normal wooden scaffold decking can be laid on the girders. A wooden strip has been fitted within the top plate of the aluminium profile, so that for support scaffolds the decking can be nailed in place to avoid the danger of slipping.

2.75	0.80	18.00	000606
3.20	0.80	20.00	000607
3.65	0.80	24.00	000608
4.30	0.80	28.00	000609
4.90	0.80	32.00	000610
5.50	0.80	36.00	000611
6.40	0.80	42.00	000612
11.90	0.80	78.00	000613

Technical details:

Weight including wood lath	5.6 kg/m	Bending stiffness	551 kN/m²
Cross section	20.9 cm²	Permissible bending moment (acc. to DIN 4113)	10.7 kN/m
Moment of inertia	787 cm⁴	Permissible transverse force (acc. to DIN 4113)	52 kN
Section modulus	93.5 cm³		

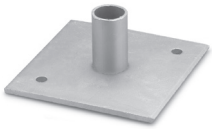


BUTT PLATE

Galvanised, complete for aluminium framework girders TITANIUM 160 H, 136/600mm (consisting of 2 plates and 4 bolts M16 x 18), Mzul. = 7.5 kN/m, Fzul. = 5kN

0.136	0.60	11.40	002260
-------	------	-------	--------

Complete accessories program and other bearers available on request.



BASE PLATE

Hot-dip galvanised steel base plate 150 x 150 mm with tube support, approx. 60 mm high. Directs the load from the standards (verticals) to the foundation.

		2.00	000090
--	--	------	--------



BASE JACK

For heavy loads. Steel, with adjusting nut, galvanised. Fast action thread, base plate 150 x 150 mm. Slip lock on grip-nut. Can also be used as head plate.

0.30		2.00	000318
0.50		2.50	000319
0.60		3.00	000320
0.78		3.50	000321
1.00		4.50	000322



TILTING BASE JACK

See base jacks above, but with swivelling base plate. Additional longitudinal scaffold bracing at base required.

0.50		3.10	000323
------	--	------	--------



CASTOR WITH SPINDLE

1,000 kg maximum load, with nylon wheel, height-adjustable.

		7.00	000332
--	--	------	--------

Ladders

Length m Width m Weight kg Art. No.



ALUMINIUM SCAFFOLD LADDER

For inside scaffold access.

STEEL SCAFFOLD LADDER

For inside scaffold access.

STEEL SCAFFOLD LADDER

This extremely robust and stable ladder has become the first choice in industry for heavy duty applications.

The side rails are of 1 1/2" steel tube so that double couplers can be used. The ladder can be extended using normal joint pins.

ALUMINIUM SCAFFOLD LADDER

With riveted tube joints, suitable for all scaffold types and may also be used for ladder platforms. Can be used with double couplers. Distance between rungs 28 cm, width 47 cm. Including joint pins and plastic base.

2.00	0.40	3.00	001323
------	------	------	--------

2.00	0.40	10.50	000172
------	------	-------	--------

2.00	0.45	21.00	000227
------	------	-------	--------

3.00	0.45	28.50	000228
------	------	-------	--------

4.00	0.45	34.50	000229
------	------	-------	--------

5.00	0.45	44.50	000230
------	------	-------	--------

2.00	0.47	5.80	000409
------	------	------	--------

3.00	0.47	8.00	000410
------	------	------	--------

4.00	0.47	10.00	000411
------	------	-------	--------

5.00	0.47	12.60	000412
------	------	-------	--------

6.00	0.47	14.50	000413
------	------	-------	--------

Anchoring

Length m Width m Weight kg Art. No.



CONNECT WALL TIE

Steel tube Ø 48.3 mm, hot-dip galvanised. The steel plate is to be mounted under the U-profile of the assembly frame. Ensures a very good diagonal stability. To be installed with a double coupler.

0.70		2.70	000124
------	--	------	--------



SCAFFOLD WALL TIE

Steel tube Ø 48.3 mm, hot-dip galvanised. Installation as short scaffold tie with one double coupler, as long scaffold tie with two double couplers.

0.30		1.40	000240
------	--	------	--------

0.40		1.80	000242
------	--	------	--------

0.50		2.00	000125
------	--	------	--------

0.60		2.60	000241
------	--	------	--------

1.00		3.80	000127
------	--	------	--------

1.30		4.80	000131
------	--	------	--------

1.50		5.50	000132
------	--	------	--------



EYEBOLT

Galvanised.

From 1.000 pieces ask for net price!

0.09		0.155	000358
------	--	-------	--------

0.12		0.175	000359
------	--	-------	--------

0.16		0.210	000360
------	--	-------	--------

0.19		0.235	000363
------	--	-------	--------

0.23		0.265	000361
------	--	-------	--------

0.35		0.364	000362
------	--	-------	--------

**EXPANSION ANCHOR**

For eye-bolts with 12 mm wood thread.
From 10.000 pieces ask for net price!

0.07		0.007	000357
------	--	-------	--------

**PLASTIC CAP**

For closing anchor drill-holes.
From 10.000 pieces ask for net price!

		0.003	000651
--	--	-------	--------

**NETS FOR ROOF FALL ARREST
SCAFFOLD AND SIDE PROTECTION**

According to ES 1263-1 and DIN 4420.
The quick and easy way to erect a safe protective wall.

10.00	2.00	5.00	000195
10.00	1.50	4.00	000191
5.00	2.00	2.50	000185
5.00	1.50	2.00	000199

**NETS FOR ROOF FALL ARREST
SCAFFOLD AND SIDE PROTECTION**

With Isilink - Clips
According to ES 1263-1 and DIN 4420.

10.00	2.00	5.00	000198
10.00	1.50	4.00	000192
5.00	2.00	2.50	000189
5.00	1.50	2.00	000201

**NET QUICK FASTENER
ISILINK - CLIPS (DBGM)**

This new Isilink-Clip fastener has been awarded with the GS Safety seal 97175 by the Certification and Testing body BG-PRÜFZERT of the Civil Engineering Committee of the Federation of Professional and Trade Associations.

		0.025	000194
--	--	-------	--------

**BELT QUICK FASTENER FOR
FASTENING SAFETY NETS**

With metal clamp-lock.
Allows installation of the safety protection net in the quickest possible time using belt quick fasteners directly on the edge of the net.

0.60		0.071	000193
------	--	-------	--------

This type of fastening offers considerable advantages:

- 1) Huge time savings when installing the nets.
- 2) The fastening materials are pre-attached to the nets.
- 3) In effect, the fastening materials can no longer go missing and therefore do not need to be searched-out when the nets are later re-used.

The "Protective net Working group" of the Civil Engineering Trade Association requires that the belt quick fasteners are used in intervals of 75 cm at most. A protective net of 10 m in length and 2.00 m high would therefore require 34 belt quick fasteners (at 75 cm intervals).



SCAFFOLD NET – the perfect protection.

This highly tear-resistant and translucent material is rot-proof and UV-stabilised. Due to its fine net structure (1.8 mm) it offers protection from both dust and rain – without heat build-up. With reinforced edges and polythene eyelets at intervals of 50 cm. Its low weight (72 g/m²) and high air permeability allows easy assembly in all weathers.

20.00	2.50	72g/m ²	000369
10.00	2.50		000370
20.00	3.00		000371
10.00	3.00		000372



QUICK TIE

0.30		0.008	000377
------	--	-------	--------



ONE WAY PLASTIC TIE

With increased tensile strength.

0.32		0.002	000378
------	--	-------	--------



SCAFFOLD PROTECTION TARPAULIN

These professional, custom size scaffold protection tarpaulins fit to all scaffold systems and framework sizes. Quick and easy opening of the punch-holes without tools. Tearproof and UV stabilised.

Please note changed anchor points.

Technical data:

Basis material: high quality leno fabric coated on both sides in green, white and blue. UV stabilised

Tear resistance: approx. 50 kg = 500 N/5 cm

Punch-hole interval: 20 cm

20.00	2.70	200g/m ²	000373
20.00	3.20		000375
10.00	2.70		000374
10.00	3.20		000376



SCAFFOLD PROTECTION TARPAULIN

Transparent strip fabric with all-round eyelets.

Tearproof: approx. 65 kg = 650 N/5 cm

20.00	2.60	160g/m ²	000406
20.00	3.10		000408
10.00	2.60		000405
10.00	3.10		000407



MJ ALUMINIUM KEDER RAIL

Our keder rails are available in custom lengths on request.

1.00		1.50	000285
2.00		3.00	000287
3.00		4.50	000288
4.00		6.00	000289
5.00		7.50	000290
6.00		9.00	000291



MJ ALUMINIUM KEDER RAIL, CURVED

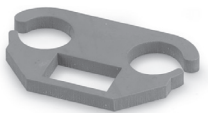
Available in various curve-angles on request.

1.00		1.50	000292
2.00		3.00	002559



MJ KEDER RAIL COUPLER

0.20		2.00	000293
------	--	------	--------



RUBBER SEAL

For beading tracks in roof areas. The seal is used between the beading track ends to protect against dripping water.

		0.005	000295
--	--	-------	--------



STRIP FABRIC BEADED TARPAULINS MESH REINFORCED BEADED TARPAULINS

With laminated beading seam on both sides to ensure safely anchored, dust and wind-free curtain barriers. Beading seam can be welded to vertical edges if required.

Technical Data:

Product name:	PVC-Mesh
Base Material:	PES according to DIN 60001
Material coating:	PVC
Gramms per square meter:	ca. 650 g/m ² according to DIN EN ISO 2286-2
Tear-Strength:	3000 N/5 cm according to DIN EN ISO 1421
Further Tearing-Resistance:	300 N according to DIN EN 1875-3 DIN 53363
Cold-Resistance:	-30°C according to DIN EN 1876-1
Heat-Resistance:	+70°C according to IVK/Point 5

Building site solutions always available. Higher strength beaded tarpaulins available on request.

10.00	2.00	650g/m ²	
10.00	2.07		
10.00	2.50		
10.00	2.57		
10.00	3.00		
10.00	3.07		



RATCHET
Special model with steel head and aluminium handle.
19 or 22 mm across flats.

A/F 19		0.70	000364
A/F 22		0.70	002486



DOUBLE SIDED RATCHET
With locking wheel.

A/F 19+22		0.90	000367
A/F 22+24		0.90	000368



RATCHET
Lightweight model.

A/F 19		0.47	000379
A/F 22		0.47	002459



DOUBLE SIDED RATCHET
Lightweight model.

A/F 19+22		0.53	000380
-----------	--	------	--------

SPARES FOR RATCHET

Locking wheel A/F 19

			001192
--	--	--	--------

Locking wheel A/F 22

			001193
--	--	--	--------

Locking wheel A/F 19 & 22

			001195
--	--	--	--------

Locking piece

			001189
--	--	--	--------

Cover

			001199
--	--	--	--------

Locking pin

			001201
--	--	--	--------

Reverse lever

			001203
--	--	--	--------

Snap ring 54 I

			001202
--	--	--	--------

Round head rivet 5.0 x 25 DIN 660

			001208
--	--	--	--------

Round head rivet 2.5 x 20 DIN 660

			001206
--	--	--	--------

Pressure spring

			001205
--	--	--	--------

Pin 2 x 12 mm

			001207
--	--	--	--------

Case

			001190
--	--	--	--------

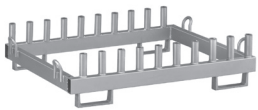
Aluminium handle

			001191
--	--	--	--------



LEATHER SPANNER HOLSTER

short		0.035	000365
long		0.065	000366



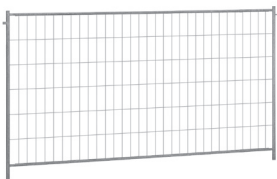
PALLET for vertical Frames
For standing palletisation.
Load capacity 20 scaffold frames.
Hot-dip galvanised.

1.25	0.70	33.00	000158
1.25	1.00	37.00	000159



STACKING PALLET
Hot-dip galvanised steel tube.
For storage and transport of
scaffold components.

1.40	0.75	30.50	000156
------	------	-------	--------



MOBILE SITE FENCE TYPE A
Hot-dip galvanised Ø 42.4 x 2.00 mm steel
tube frame with 4 mm round steel mesh,
105 x 290 mm mesh size.
Buckling resistant.

3.50	2.00	24.00	000615
------	------	-------	--------



CONCRETE BASE
Reinforced concrete with wire inset and
slots for fencing components.

0.70	0.25	36.00	000616
------	------	-------	--------



FIXING SET
Galvanised, for mobile site fence
(packing unit: 20 pieces)

		0.50	002303
--	--	------	--------



MOBILE FENCING SUPPORT „STARR“
For quick fixing of mobile site fences.

0.70		5.50	000617
------	--	------	--------



CASTOR

		3.40	000381
--	--	------	--------



MINI 60 S SCAFFOLD ERECTION HOIST

230 V, 2 lifting speeds of approx. 23 & 69 m/min. Load capacity 60 kg. Complete with 51 m wire rope, twist preventer and hook. Control unit plug-in type 10 m cable with emergency-off button. Rope tensioner

		50.00	002261
--	--	-------	--------



MAXI 120 S SCAFFOLD ERECTION HOIST

230 V, 2 lifting speeds of approx. 20 & 60 m/min. Load capacity 120 kg. Complete with 51 m wire rope, twist preventer and hook. Control unit, plug-in type with emergency-off button and 10 m cable.

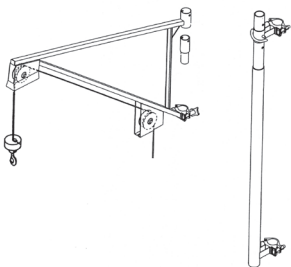
		60.00	002263
--	--	-------	--------



MAXI 150 S SCAFFOLD ERECTION HOIST

230 V, 2 lifting speeds of approx. 15 & 45 m/min. Load capacity 150 kg. Complete with 51 m wire rope, twist preventer and hook. Control unit plug-in type, with emergency-off button and 10 m cable.

		60.00	002264
--	--	-------	--------



SPECIAL SWIVEL ARM FOR MAXI 120 S

For scaffold erection. Pushing the pedal, causes the top end of the swingarm to be released from its lock, allowing the arm to be swung inside the scaffold.

		24.50	002265
--	--	-------	--------

STANDARD SWIVEL ARM FOR MAXI 120 / 150 S

For mounting at the required height.

		13.00	002266
--	--	-------	--------



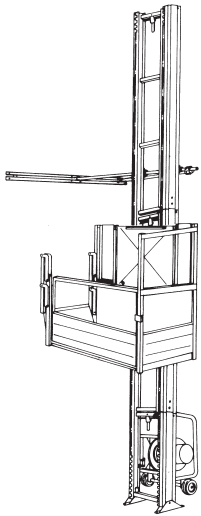
OPTIONAL ACCESSORIES FOR MINI 60 S / MAXI 120 S

30 m manual control with emergency-off button
50 m manual control with emergency-off button
Please state year of manufacture when ordering.

30.00		7.00	002267
50.00		13.00	002268

STEEL WIRE ROPE
4.5 mm Ø.

51.00		4.50	002269
81.00		6.30	002270



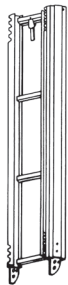
**COMBILIFT 200 Z
for inclined and vertical applications**

- Load capacity / vertical use 200 kg
- Load capacity / inclined use 250 kg
- Lifting speed 25 m/min
- Lifting height 30 m

Base unit consisting of

- Base section 2.0 m
- Trolley with drive unit
1.3 kW / 230 V / 50 Hz and
overspeed safety brake
- Manual control, plug-in type,
with 5 m cable
- Spring cable reel with trailing cable
for 30 m lifting height
- **Transport axle**

		93.00	002271
--	--	-------	--------



EXTENSIONS OF THE BASE UNIT

Ladder section 2 m

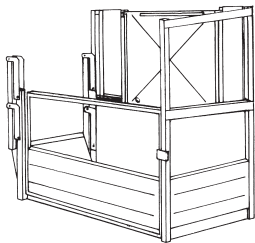
With tooted rack, cable duct and quick-lock device.

		22.00	002272
--	--	-------	--------

Ladder section 1 m

With tooted rack, cable duct and quick-lock device.

		11.00	002273
--	--	-------	--------



**ADDITIONAL EQUIPMENT FOR THE
BASE UNIT FOR VERTICAL USE**

Load platform

(inside dimensions 136 x 75 x 110 cm).

		112.00	002274
--	--	--------	--------

Standard frame for transport scaffold parts

		1.70	002275
--	--	------	--------

Special frame for transport scaffold parts

			004473
--	--	--	--------

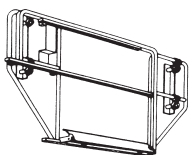
Set of ladder track fixing clamps

1 set for base section and 1 set every 4 m;
also serves to fix the ladder track to a scaffold.

		2.10	002276
--	--	------	--------

Wall fixing bracket

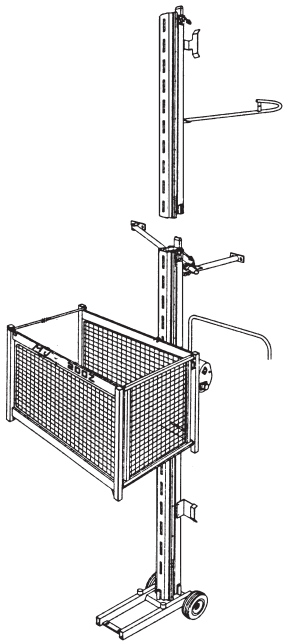
		7.50	002277
--	--	------	--------



Hoist platform gate

Hot-dip galvanised.
With mechanically locking sliding gate.
For all Ø 48 mm steel tube scaffolds, width
adjustable between 1.60 m – 2.50 m.

		29.00	002996
--	--	-------	--------



RACK HOIST 200 Z
Rack and pinion hoist with aluminium mast

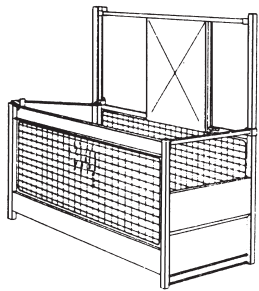
- Load capacity 200 kg
- Lifting speed 25 m/min
- Maximum lifting height 50 m

Basic unit consisting of:

- Foot section with 2 m base mast
- Swivel trolley with 1.5 kW / 230 V / 50 Hz drive unit and overspeed safety brake
- Limit switch operating element
- Safety stop approx. 2 m above ground level with warning sound
- Operational and emergency limit switches at top and bottom
- Limit switch for swivel of trolley
- Assembly control
- Overload protection
- Crane jack, Power socket 230 V
- Manual control 5 m

Without cable bin and trailing cable

		215.00	002279
--	--	--------	--------



LOAD CARRYING DEVICES

Load platform

With supervised loading flap.
 Inside dimensions 1.4 x 0.75 x 1.1/1.8 m.

Standard frame

For load platform.
 For scaffold components transport.

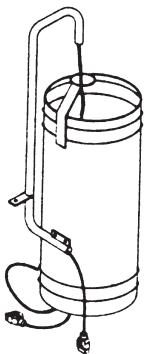
Special frame

For load platform.
 For scaffold components.

1.40	0.75	60.00	002280
------	------	-------	--------

1.40	0.75	6.50	002281
------	------	------	--------

1.40	0.75	14.00	002282
------	------	-------	--------



EQUIPMENT FOR BASE UNIT

Cable bin with trailing cable

25 m lifting height.

Cable bin with trailing cable

50 m lifting height.

		36.00	002283
--	--	-------	--------

		48.00	002284
--	--	-------	--------

EXTENSIONS FOR BASE UNIT**2 m aluminium mast**

With captive screws.

		25.00	002285
--	--	-------	--------

1 m aluminium mast

With captive screws.

		14.00	002286
--	--	-------	--------

Mast tie

1 piece for base mast, and 1 piece for every 4 m mast.

		4.00	002287
--	--	------	--------

Set of fixing tubes

For wall fixing. 1 set per mast tie.

		8.40	002288
--	--	------	--------

Cable guides

At 6 m intervals.

		1.50	002289
--	--	------	--------

ACCESSORIES**Current distribution box**

		8.00	002290
--	--	------	--------

Cable drum

With 33 m cable, 3 x 2.5 mm² / 230 V.
This size cable cross-section is absolutely necessary.

		8.00	002291
--	--	------	--------

Uniaxial trailer

50 mph without coupling devices.
Automatic unloading without auxillary devices.

		135.00	002292
--	--	--------	--------

Ball type coupling for cars

		3.00	002293
--	--	------	--------

Ring type coupling for lorries

		11.50	002294
--	--	-------	--------



STEEL BOARD SHOE
For UNI timber boards.

	0.32	0.80	001506
--	------	------	--------



STEEL BOARD SHOE
For UNI CONNECT timber boards.

	0.32	1.10	001415
--	------	------	--------



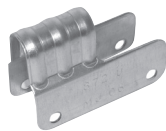
RIVETS 23 x 1 x 54 mm

		0.033	001811
--	--	-------	--------



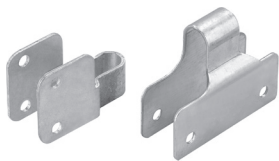
RIVETS 12 x 1 x 54 mm

		0.011	001805
--	--	-------	--------



TOEBOARD FITTING UC

		0.40	004203
--	--	------	--------



TOEBOARD FITTING UNI

left		0.40	001406
right		0.40	001407



END TOEBOARD FITTING UNI + UC
Two pieces per toeboard needed.

		0.15	002039
--	--	------	--------



RIVETS 8 x 1 x 42 mm

		0.011	001820
--	--	-------	--------



M14 RINGBOLT
For handrail support and fixing top decking.

		0.14	001761
--	--	------	--------



BOLT-ON SWIVEL PIN

		0.10	000169
--	--	------	--------

Classification of scaffoldtype on the building site

Length m	Width m	Weight kg	Art. No.
-------------	------------	--------------	-------------



SCAFFOLD SIGNBOARD
PVC, with clear slot-in sleeve, for classification of the scaffold on-site.

			000653
--	--	--	--------



FORM PAD
For use with the scaffold sign and classification of the scaffold on-site.

			000654
--	--	--	--------

Advertising Tarpaulin Sheet

Length m	Width m	Weight kg	Art. No.
-------------	------------	--------------	-------------



			on request
--	--	--	------------

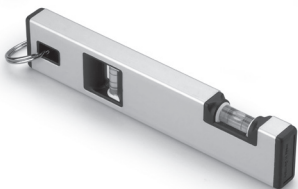
Measuring Instruments

Length m	Width m	Weight kg	Art. No.
-------------	------------	--------------	-------------



**LASER MEASURING DEVICE
"LEICA" DISTO CLASSIC**
Measurement range from 0.2 m to 200 m
Accuracy ± 2 mm.

			000416
--	--	--	--------



30 cm SPIRIT LEVEL
With hole for karabiner hooks.

			000382
--	--	--	--------

MJ-Gerüst GmbH

Ziegelstraße 68
58840 Plettenberg
Germany
Fon: +49 (0) 23 91 . 81 05 -372
Fax: +49 (0) 23 91 . 81 05 -375
email: infomj@mj-geruest.de
www.mj-geruest.de

Subsidiary Berlin

Poratzstraße
16225 Eberswalde
Germany
Fon: +49 (0) 33 34 . 58 90 -70
Fax: +49 (0) 33 34 . 58 90 -718
Mobil: +49 (0) 171 . 69 18 958

**The other companies belonging to
the Junior Group:****Junior Kühlkörper GmbH**

Heatsinks
Precision components for
the electronics and electrical industry
58840 Plettenberg
Germany
Fon: +49 (0) 23 91 . 81 05 -200
Fax: +49 (0) 23 91 . 81 05 -280

MJ - Modul Rent GmbH

Modular space rental
Sales and rental of container accomodation
for residential use, office buildings, industry
and commerce
58840 Plettenberg
Germany
Fon: +49 (0) 23 91 . 81 05 -400
Fax: +49 (0) 23 91 . 81 05 -457



Quality
Management
System

DIN EN ISO 9001:2000

