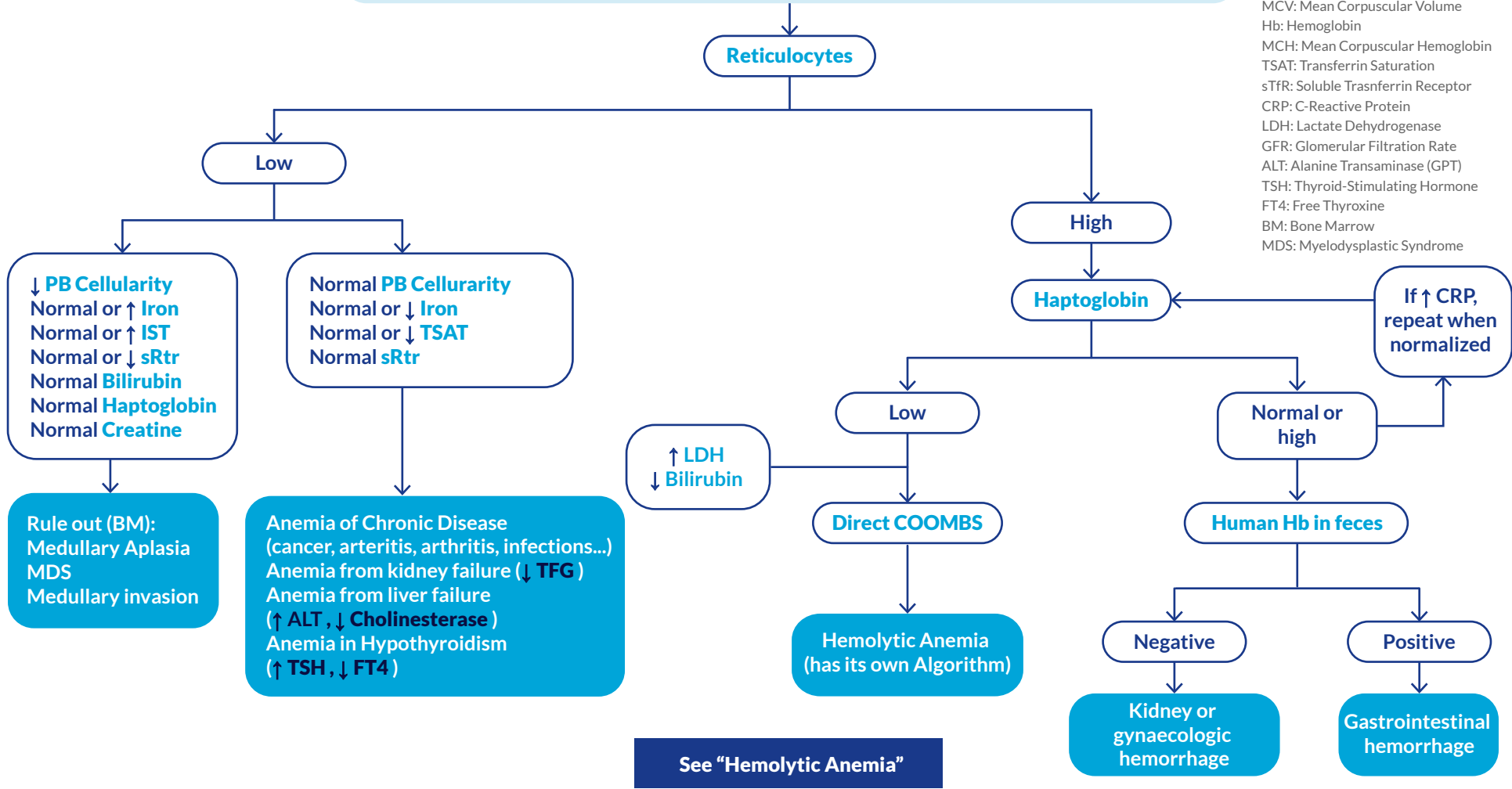


Hemogram, PB Morphology, tBIL, dBIL, Iron reserves, Reticulocytes, Vit. B12, IE Folate (80 fL < MCV < 100 fL; Low Hb; Normal MCH)

ABBREVIATIONS:
 PB: Peripheral Blood
 tBIL: Total Bilirubin
 dBIL: Direct Bilirubin
 VB12: Vitamin B12
 IE Folate: Intra-Erythrocyte Folate
 MCV: Mean Corpuscular Volume
 Hb: Hemoglobin
 MCH: Mean Corpuscular Hemoglobin
 TSAT: Transferrin Saturation
 sTfR: Soluble Transferrin Receptor
 CRP: C-Reactive Protein
 LDH: Lactate Dehydrogenase
 GFR: Glomerular Filtration Rate
 ALT: Alanine Transaminase (GPT)
 TSH: Thyroid-Stimulating Hormone
 FT4: Free Thyroxine
 BM: Bone Marrow
 MDS: Myelodysplastic Syndrome



See "Hemolytic Anemia"